

Our Main Speakers

Back by popular demand
NOEL WHITTAKER AM



International best-selling author, finance and investment expert, radio broadcaster, newspaper columnist and public speaker – Noel Whittaker is Australia's money management visionary.

RACHEL LANE
Aged Care Gurus



Principal of Aged Care Gurus, Rachel is a well-known and respected authority in aged care. Co-author with Noel Whittaker of best seller "Aged Care who Cares" and latest publication "Retirement Living Handbook".

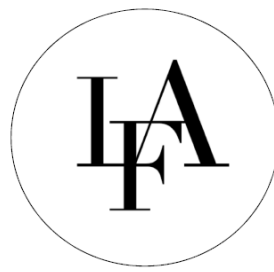
JULIE LOCKERIDGE
Master of Ceremonies



Principal of Lockeridge Financial Advisory a firm specialising in retirement and aged care advice.

Exhibitors Include:

Centrelink, Elder Lawyer, Aged Care Facilities, Retirement Villages, In-home Care providers and many more.



LOCKERIDGE FINANCIAL ADVISORY

Retirement Living and Aged Care Forum - "be prepared, changes ahead" 1st June 2016

The decisions people face when funding aged care for themselves or a loved one are complex, making the wrong decisions can come at a high price both emotionally and financially. Changing rules add another layer of complexity.

Julie has put together a well-informed panel of speakers featuring Noel Whittaker & Rachel Lane who will discuss the implications of the changes on 1 January 2017 that will affect anyone contemplating moving to a retirement community or aged care facility.

FREE ENTRY

Venue: Robina Community Centre, ROBINA

Date: 1st June 2016

Time: 9.00am– 12.00pm

(refreshments will be served)



RSVP essential as seats are limited

Call LFA office on 07 5597 5550 or email admin@LFA.net.au to register your attendance.

Julie Lockeridge and the Lockeridge Financial Advisory Pty Ltd is an authorised representatives of Meritum Financial Group Pty Ltd ABN 93 106 888 215, Australian Financial Services Licence 245569. Level 15, 60 Albert Rd, South Melbourne, VIC 3205.